



MPP150 Master Pin Pusher Specifications

DIMENSIONS

Weight (less Hydraulic Power Supply) 800 lbs (364 kg)

Length..... 64 inches (1,63 m)

Width 12 inches (0,30 m)

Height 18 inches (0,46 m)

PRESSING CAPACITY **150 Short Tons (136 tonnes)**

CYLINDER STROKE **16 inches (406 mm)**

THROAT DIMENSIONS

Throat Width 27" (0,68 m)

Throat Depth10" (0,25 m)

HYDRAULIC POWER SUPPLIES

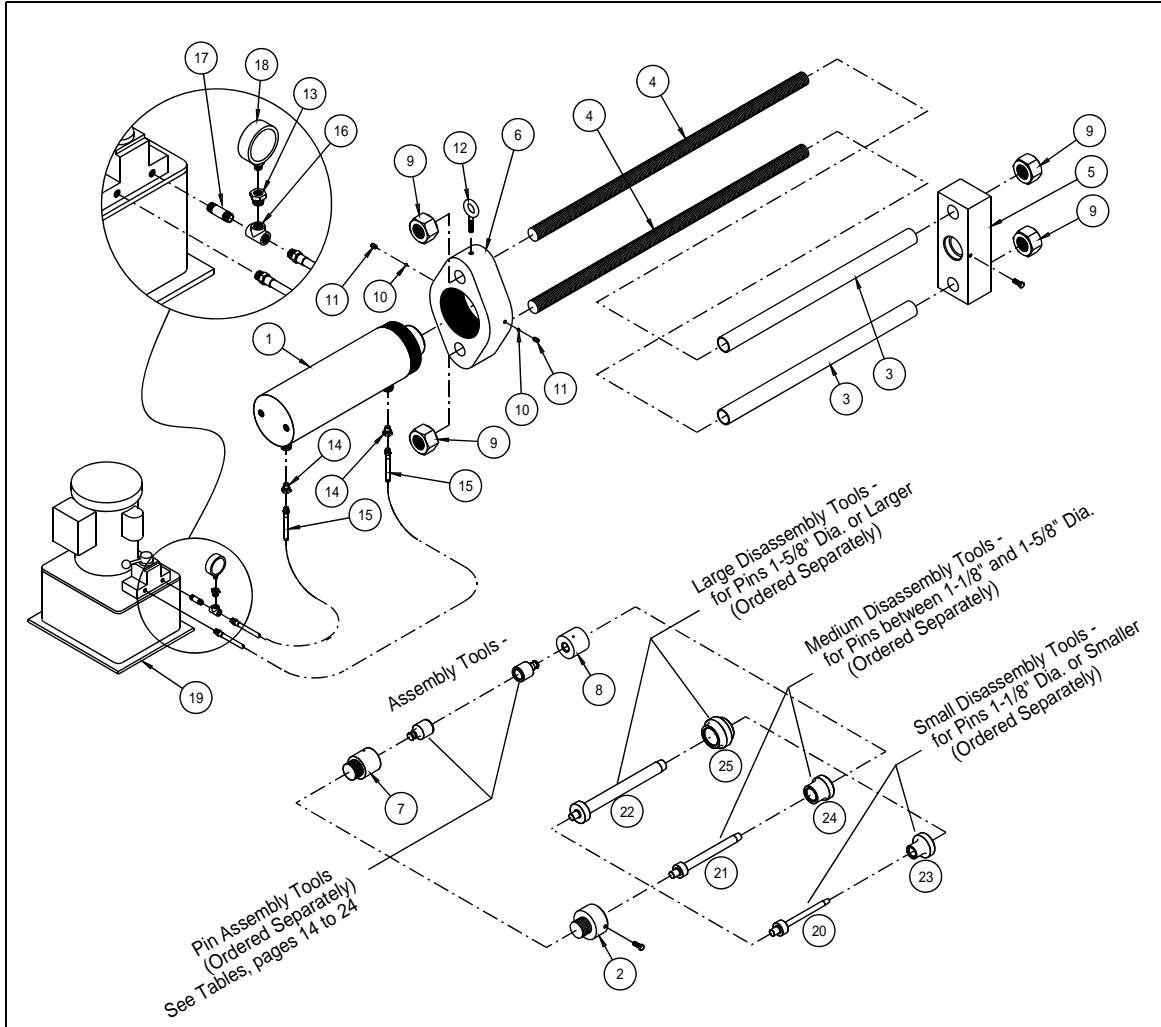
Maximum Pressure (all units)..... 10,000 p.s.i. (690 bar)

	Compressed Air Power	Electric* Power	Gasoline Power	Hand Power
MPP150 Model	MPP150-A	MPP150-E	MPP150-G	MPP150-H
Reservoir Capacity	5 gal (18,9 l)	5 gal (18,9 l)	5 gal (18,9 l)	2¼ gal (8,5 l)
Flow @ 150 psi (10,3 bar)	480 in ³ /min (7,8 lpm)	560 in ³ /min (9,1 lpm)	560 in ³ /min (9,1 lpm)	145 in ³ /min (2,4 lpm)**
Flow @ 10000 psi (690 bar)	45 in ³ /min (0,7 lpm)	40 in ³ /min (0,6 lpm)	40 in ³ /min (0,6 lpm)	5 in ³ /min (0,08 lpm)**
Power	4 Hp (3,0 kW)	1½ Hp (1,1 kW)	3¾ Hp (2,8 kW)	-
Power Supply	62 SCFM @ 100 psi 1,8 m ³ /min @ 6,9 bar)	17 A @ 115 V 60Hz 9.0 A @ 220 V 50/60HZ	4-Cycle Petrol Engine	-
Width	12.8" (325 mm)	12.8" (325 mm)	12.8" (325 mm)	25.0" (635 mm)
Length	16.5" (419 mm)	16.5" (419 mm)	16.5" (419 mm)	11.2" (284 mm)
Height	12.3" (312 mm)	16.0" (406 mm)	18.4" (467 mm)	14.1" (358 mm)
Dry Weight	84 lb (38 kg)	100 lb (45 kg)	100 lb (45 kg)	71 lb (32 kg)

- - Also available: 10.0 Amps, 230V 60Hz, 1 Phase (MPP150-220DOM)
10.0 Amps, 220V 50Hz, 1 Phase (MPP150-220-50 and MPP150-220CE)

** - Flow based on 20 strokes per minute

SPECIFICATIONS SUBJECT TO CHANGE WITHOUT NOTICE



MPP150 Models –

- MPP150 – MPP150 less Hydraulics
 - Includes items 1 to 12 (page 4)
- MPP150-H – MPP150 with Hand Powered Pump
 - Includes items 1 to 18 and Hand Pump (item 19)
- MPP150-A – MPP150 with Compressed Air Powered Pump
 - Includes items 1 to 18 and Compressed Air Powered Pump (item 19)
- MPP150-E – MPP150 with 115 V Electric Powered Pump
 - Includes items 1 to 18 and 115 Volt 60 Hertz Electric Powered Pump (item 19)
- MPP150-220 – MPP150 with 220V 50Hz Electric Powered Pump (Outside North America)
 - Includes items 1 to 18 and 220 Volt 50 Hertz Electric Powered Pump (item 19)
- MPP150-220DOM – MPP150 with 220V 60Hz Electric Powered Pump (Inside North America)
 - Includes items 1 to 18 and 220 Volt 60 Hertz Electric Powered Pump (item 19)
- MPP150-G – MPP150 with Gasoline Powered Pump
 - Includes items 1 to 18 and Gasoline Powered Pump (item 19)

Rev C – 10.07.14 – Add Gasoline Pump

MPP150 Part Listing – Item Numbers Refer to Parts Identification Drawing (page 3)

Item No.	Part Number	Description	No Pump	Hand Pump	Electric Pump - 120 V 60 Hz	Electric Pump - 220 V 50 Hz	Electric Pump - 220 V 60 Hz	Air Pump	Gasoline Pump
			MPP150	MPP150-H	MPP150-E	MPP150-220	MPP150-220-CE	MPP150-220DOM	MPP150-A
1	A3510	Hydraulic Cylinder	1	1	1	1	1	1	1
2	A3535	Pin Tool Holder	1	1	1	1	1	1	1
3	A3542-005	Connecting Rod Spacer	2	2	2	2	2	2	2
4	A3543-005	Connecting Rod	2	2	2	2	2	2	2
5	A3544	Backer Bar	1	1	1	1	1	1	1
6	A3545	Cylinder Mount	1	1	1	1	1	1	1
7	B2866	Cylinder-Side Cam Lock Adapter	1	1	1	1	1	1	1
8	B2867	Backing-Side Cam Lock Adapter	1	1	1	1	1	1	1
9	36-0510	2"-12 Hex Nut	4	4	4	4	4	4	4
10	419102	Nylon Pellet	2	2	2	2	2	2	2
11	529-112	1/2"-13 X 1/2" Set Screw	2	2	2	2	2	2	2
12	529-684	5/8"-11 Eyebolt	1	1	1	1	1	1	1
13	34-1210	Hydraulic Fitting	-	1	1	1	1	1	1
14	34-2003	Hydraulic Coupling	-	2	2	2	2	2	2
15	34-2004	Hydraulic Hose	-	2	2	2	2	2	2
16	34-2006	Tee Fitting	-	1	1	1	1	1	1
17	34-2007	Pipe Nipple	-	1	1	1	1	1	1
18	9077	150 Ton Pressure Gauge	-	1	1	1	1	1	1
19	34-2012	Pump Base - Hand Pump	-	1	-	-	-	-	-
	34-2215	Pump Base - 120 V 60 Hz	-	-	1	-	-	-	-
	34-2002-220-60	Pump Base - 220 V 60 Hz	-	-	-	-	1	-	-
	34-2074	Pump Base - 220 V 50 Hz CE	-	-	-	1	-	-	-
	34-2163	Pump Base - 220 V 50 Hz	-	-	-	1	-	-	-
	34-2173MPP	Pump Base - Air Powered	-	-	-	-	-	1	-
	34-2193-MPP	Pump Base – Gasoline Powered	-	-	-	-	-	-	1
20	A3536	Small Pin Tool (Optional)	Optional Tooling						
21	A3537	Medium Pin Tool (Optional)							
22	A3538	Large Pin Tool (Optional)							
23	A3539	Small Backing Bushing (Optional)							
24	A3540	Medium Backing Bushing (Optional)							
25	A3541	Large Backing Bushing (Optional)							

Rev C – 10.07.14 – Add Gasoline Pump