



WTC MACHINERY Engineered to perform. Built to last.

WTC Machinery is a global leader in designing and building machinery and tooling for heavy equipment repair facilities.

MPP250 Portable Pin Press

Overview

WTC Machinery's MPP250 Portable Pin Press is the big brother to the FP100 and MPP150 presses. As with the MPP150, the MPP250 pin press also features a tie rod design and is suited to service excavators and bulldozers up to a Caterpillar D11, Komatsu 475 or comparable large machinery. With the full range of tooling, the MPP150 pin press can service track style chains with pin diameters ranging from .87" (22,0mm) up to 3" (76mm).



The MPP250 press is available without a hydraulic pump, or we provide several durable pumps to match shop or a service truck power. For safety during use, we also offer an optional pressure gauge, lifting sling (engineered specifically for use with this press) and a safety blanket (to protect from possible flying debris).

Due to the sheer size of this press a box is not an option. To protect your investment and keep everything together in one convenient spot WTC offers a custom travel skid with optional cover for safe and secure storage and transportation of your MPP250 press, pump and tooling.



MPP250 on Travel Skid
MPP250-TS



W1222 LINDEN ROAD, IXONIA, WISCONSIN 53036 USA
Phone: 800-248-8405 or 262-567-3993 • Fax: 262-567-4307 www.wtcmachinery.com

MANUFACTURERS/BENEFICIARY'S WARRANTY CERTIFICATE WTC MACHINERY, LLC WARRANTY

WTC MACHINERY, LLC warrants its products to be free from defects in material and workmanship under normal use and service for a period of twelve (12) months after date of shipment. WTC MACHINERY, LLC undertakes to be responsible for any defect that may arise due to faulty raw materials, design, workmanship and defective parts and to replace them without extra cost. Freight charges are the customer's responsibility. Our warranty is not transferable.

WTC MACHINERY, LLC shall have the option of requiring the return of all parts claimed defective. Parts proved to be defective, due to defect in workmanship and/or material, shall be either repaired or replaced free of charge, F.O.B. our designated factory. All parts warranty claims are subject to inspection by WTC MACHINERY, LLC and acceptance at the factory

Our warranty does not obligate us to bear the cost of labor or transportation charges in connection with the replacement or repair of defective parts and the removal and/or remounting of the parts repaired or replaced under this warranty, unless specifically authorized in writing by WTC MACHINERY, LLC. All parts returned to the factory must be shipped freight prepaid; no collect freight will be accepted by the factory. Forms authorizing such returns for inspection must accompany all returns.

This warranty shall not apply to products not manufactured by WTC MACHINERY, LLC. Outside purchased equipment and accessories (not of WTC manufacture) are warranted only to the extent of the original equipment manufacturer's warranty and subject to their allowance to WTC MACHINERY, LLC. In this respect, our warranty obligations must conform and be limited to the warranty extended to WTC MACHINERY, LLC by its suppliers as extended to the customer.

We shall, in no event, be liable for consequential damages or contingent liability arising out of the failure of any unit or part to operate properly, or that is subject to:

- Ordinary operating wear, abuse, misuse, or overloading;
- Repairs or alterations by parties other than WTC MACHINERY, LLC;
- The use of improper fluids, contaminated fluids or improper filtering;
- The use of improper voltage hookup in the electrical connections of any equipment;
- Negligence, accident or damages due to deterioration during periods of storage by the purchaser prior to installation and operation;
- Damages occurred in shipment after leaving factory en route to customers' delivery point, as title to equipment passes to customer when loaded onboard for shipment, f.o.b. factory, and customer must place his own claim against damaged goods directly to the shipping company and not against WTC MACHINERY, LLC, its factory, or any of its personnel.
- Damages due to circumstances beyond the control of WTC MACHINERY, LLC and in connection with fulfilling any obligation under this warranty.

To the maximum extent permitted by applicable law, in no event shall WTC Machinery, LLC be liable for indirect, special, incidental or consequential damages resulting from personal injury, loss of business profits or business interruption from the use of its products, or from the inability to use its products.

This warranty is exclusive and is in lieu of all other expressed and implied warranties, including but not limited to implied warranties or merchantability and fitness for a particular purpose. WTC MACHINERY, LLC shall not be subject to any other obligations or liabilities whatsoever with respect to equipment manufactured or supplied by WTC MACHINERY, LLC, or services rendered to it.



SECTION 2 – MPP250 Portable Pin Press Specifications

DIMENSIONS

Weight (less Hydraulic Power Supply) 1250 lbs (568 kg) **Length**80 inches (2,03 m)
Width 19 inches (0,48 m) **Height** 27 inches (0,69 m)

ENVIRONMENTAL

Operating Temperature Range: -40 to 100 °F (-40 to 38 °C) (See page 6 for hydraulic oil recommendations)

Storage Conditions: 0 to 150 °F (-18 to 65 °C) Non-condensing Moisture

PRESSING CAPACITY

250 Short Tons (277 tonnes)

HYDRAULIC CYLINDER STROKE

Stroke – 18 inches (457 mm) Bore – 8 inches (203 mm)

THROAT DIMENSIONS

Width – 42 inches (1066 mm) Depth – 15 inches (381 mm)

TRACK MODELS

Up to Caterpillar D11, Komatsu D475, and comparable Bulldozer and Excavator Tracks

HYDRAULIC POWER SUPPLIES

Maximum Pressure (all units)..... 10,000 p.s.i. (690 bar)

	Compressed Air	115V 60 Hz Electric	220V 50 Hz Electric*
MPP250 Model	MPP250-A	MPP250-E	MPP250-220-CE
Reservoir Capacity	5 gal (18,9 l)	5 gal (18,9 l)	5 gal (18,9 l)
Flow @ 150 psi (10,3 bar)	500 in ³ /min (8,2 lpm)	310 in ³ /min (5,1 lpm)	700 in ³ /min (11,5 lpm)
Flow @ 10000 psi (690 bar)	100 in ³ /min (1,6 lpm)	37 in ³ /min (0,6 lpm)	60 in ³ /min (1,0 lpm)
Power	4 Hp (3,0 kW)	1-1/2 Hp (1,1 kW)	1-3/4 Hp (1,3 kW)
Power Supply	62 SCFM @ 100 psi 1,8 m ³ /min @ 6,9 bar	10 A @ 115 V 60Hz	11 A @ 220 V 50 Hz
Width	11.7" (0,30 m)	11.7" (0,30 m)	19.7" (0,50 m)
Length	25.8" (0,66 m)	25.8" (0,66 m)	24.0" (0,61 m)
Height	12.6" (0,32 m)	18.3" (0,47 m)	18.3" (0,47 m)
Dry Weight	44 lb (20 kg)	108 lb (49 kg)	109 lb (50 kg)

* - Also available: 5.0 Amps, 220V 60Hz, 1 Phase (MPP250-220DOM)
 5.0 Amps, 220V 50Hz, 1 Phase Non-CE Mark (MPP250-220)

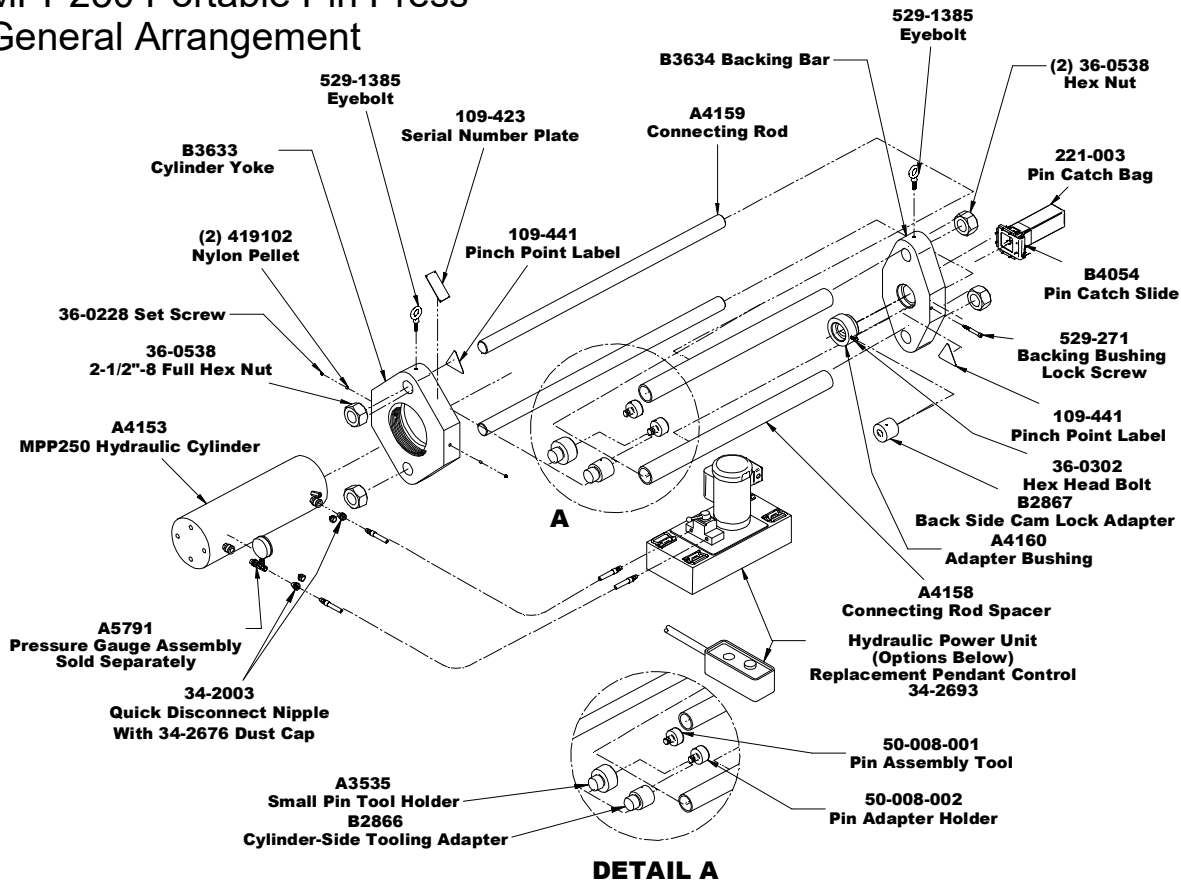
** - Flow based on 20 strokes per minute

SPECIFICATIONS SUBJECT TO CHANGE WITHOUT NOTICE



PART IDENTIFICATION

MPP250 Portable Pin Press
General Arrangement



MODEL LISTING

- MPP250*** MPP250 with Cylinder, less Hydraulic Parts (Pump, Hoses and Fittings)
–Customer supplied Pump Base and Hydraulic Hoses
- MPP250-E MPP250 with 115 V Electric Powered Pump
– Includes 34-3057 Electric Pump 115V 60 Hz
- MPP250-220 MPP250 with 220V 50Hz Powered Electric Pump (Outside North America)
– Includes 34-3059 Electric Pump 220V 50 Hz
- MPP250-220DOM MPP250 with 220V 60Hz Electric Powered Pump (Inside North America)
– Includes 34-3061 Electric Pump 230V 60 Hz
- MPP250-220-CE*** MPP250 with CE-Certified 220V 50Hz Powered Electric Pump (European Union)
– Includes 34-2074 Electric Pump 220V 50 Hz CE-Marked
- MPP250-A MPP250 with Compressed Air Powered Pump
– Includes 34-3003MPP Compressed Air-Powered Pump

** Certified



SECTION 6 – MPP250 Portable Pin Press Tooling Chart

! WARNING!

The MPP250 Portable Pin Press generates high forces, which present a risk of crush damage and flying debris. Only trained personnel familiar with the MPP250 and should use the MPP250. Always make sure the MPP250 and tooling are aligned and centered with track components before pressing. Always wear eye protection when operating the MPP250. Always keep clear of moving parts when the MPP250 is in use.

! CAUTION!

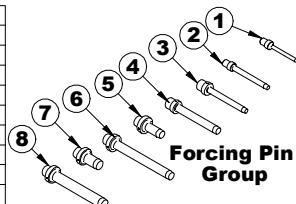
Track condition affects the disassembly force, and some track models may exceed the capacity of the MPP250. It is the operator's responsibility to determine whether the MPP250 is adequate for a particular track.

The Tooling Chart (starting on page 14) show the disassembly and assembly tooling for most crawler track models. For track models not listed, the drawing (below) shows the size ranges for Forcing Pins, Pin Adapters and Backing Bushing.

See www.WTCmachinery.com for updated to tool charts.

Disassembling large track models - those with high pressing forces and long pin lengths - require pairs of Pin Tools. Use the short "Starter" Pin Tool to make the initial push, and then switch to the long "Finishing" Pin Tool to complete pressing out the pin

Forcing Pins		
Item	Part No.	Description
1	A3536	Pin Tool - (0.87" to 1.25" (22 to 31,7 mm))
2	A3537	Pin Tool - (1.25" to 1.37" (31,7 to 34,9 mm))
3	B3635	Pin Tool - (1.37" to 1.87" (34,9 to 47,6 mm))
4	B3815	Pin Tool - (1.87" to 2.12" (47,6 to 53,8 mm))
5	B3608	Pin Tool (short) - (2.12" to 2.50" (53,8 to 63,5 mm))
6	B3607	Pin Tool (long) - (2.12" to 2.50" (53,8 to 63,5 mm))
7	B3631	Pin Tool (short) - (2.50" to 3.00" (63,5 to 76,2 mm))
8	B3632	Pin Tool (long) - (2.50" to 3.00" (63,5 to 76,2 mm))

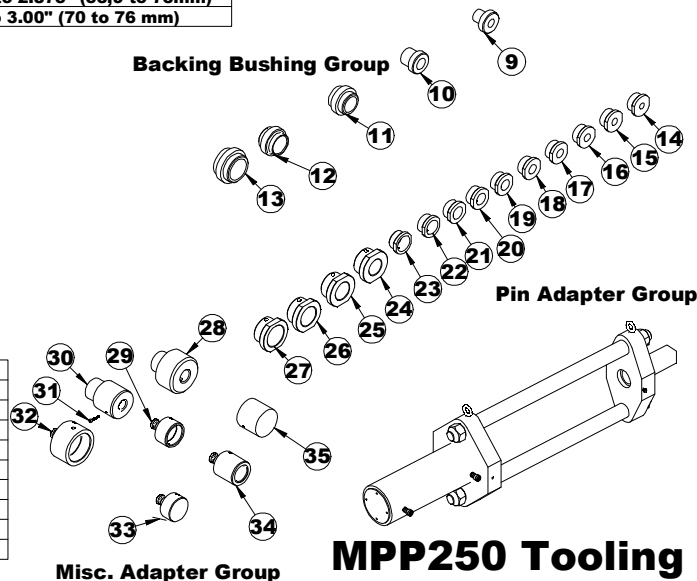


Part	Pin Diameter
200281	0.86" to 1.17"
25498	1.17" to 1.30"
25499	1.30" to 1.42"
25500	1.42" to 1.55"
25547	1.55" to 1.67"
25548	1.67" to 1.80"
25551	1.80" to 1.98"
25501	1.98" to 2.25"
25553	2.37" to 2.63"
25554	2.75" to 3.0"

Optional Forcing Pins (Not Shown)

MPP250 Backing Bushings			
Item	Part Number	Description	Pin Size Range
9	A3539	Small Backing Bushing	1.25" (31,8mm) and Smaller
10	A3540	Medium Backing Bushing	1.25" to 1.75" (31,8 to 44,5mm)
11	A3541	Large Backing Bushing	1.75" to 2.5" (44,5 to 63,5mm)
12	A3541-001	Extra Large Backing	2.125" to 2.875" (53,9 to 73mm)
13	A4157	Extra-Large Bushing	2.75" to 3.00" (70 to 76 mm)

Pin Adapters		
Item	Part Number	Min/Max Pin Dia.
14	50-007-009	0.63" to 0.84" (15,9 to 21,4 mm)
15	50-007-008	0.84" to 0.94" (21,4 to 23,8 mm)
16	50-007-007	0.94" to 1.09" (23,8 to 27,7 mm)
17	50-007-006	1.09" to 1.22" (27,7 to 30,9 mm)
18	50-007-005	1.22" to 1.34" (30,9 to 34,1 mm)
19	50-007-004	1.34" to 1.47" (34,1 to 37,3 mm)
20	50-007-010	1.47" to 1.60" (37,3 to 40,7 mm)
21	50-007-003	1.60" to 1.72" (40,7 to 43,6 mm)
22	50-007-002	1.72" to 1.97" (43,6 to 50,0 mm)
23	50-007-001	1.97" to 2.22" (50,0 to 56,3 mm)
24	50-021-1	2.00" to 2.25" (50 to 57 mm)
25	50-021-2	2.25" to 2.50" (57 to 63 mm)
26	50-021-3	2.50" to 2.75" (63 to 70 mm)
27	50-021-4	2.75" to 3.00" (70 to 76mm)



Misc. Adapter Group		
Item	Part Number	Description
28	*A3535	Small Pin Tool Holder
29	*50-008-002	Pin Adapter Holder
30	*B2866	Cylinder-Side Cam-Lock Adapter
31	*529-522	Pin Locking Bolt
32	*50-020	Large Track Pin Holder
33	*50-008-001	Pin Assembly Tool
34	Pin Ass'y Tool	See Tooling Chart
35	*B2867	Backing Bar-Side Cam-Lock

* Items Included With MPP250

MPP250 Tooling